

## ORIGINAL ARTICLE

# Nephroprotective effect of N-acetylglucosamine in rats with acute kidney injury

## Nefroprotektivní účinek N-acetylglukosaminu u potkanů s akutním poškozením ledvin

Sergii K. Shebeko • Igor A. Zupanets • Olha O. Tarasenko

Received July 4, 2019 / Accepted August 16, 2019

### Summary

The article presents the results of the study of the nephroprotective effect of N-acetylglucosamine (NAG) under the development of experimental acute kidney injury (AKI). The study was conducted on a model of acute glycerol nephrosis in rats. NAG was studied at a dose of 50 mg/kg at daily parenteral administration during 1 week compared to quercetin, which was administered intraperitoneally at a dose of 34 mg/kg. The efficiency of the drugs was assessed by the functional state of animals, the renal excretory function and the nitrogen metabolism indices. The NAG effect on rats with AKI caused a reduction of the mortality rate, an increase in diuresis, a reduction of proteinuria, an increase in creatinine and urea excretion, which indicates the normalization of the renal excretory function and nitrogen metabolism. At the same time, NAG has statistically significantly exceeded the effect of quercetin in the majority of indices and, therefore, the level of efficiency. Thus, NAG is an efficient agent for AKI treatment, which can be used at parenteral route of administration.

**Key words:** N-acetylglucosamine • nephroprotective effect • experimental acute kidney injury

### Souhrn

Článek prezentuje výsledky studie nefroprotektivního účinku N-acetylglukosaminu (NAG) na vývoj experimentálního akutního poškození ledvin (APL). Studie byla provedena na modelu akutní glycerolové nefrózy u potkanů. NAG byl studován v dávce 50 mg/kg při denním parenterálním podání během jednoho týdne ve srovnání s kvercetinem, který byl podáván intraperitoneálně v dávce 34 mg/kg. Účinnost léčiv byla hodnocena podle

funkčního stavu zvířat, renální vylučovací funkce a ukazatelů metabolismu dusíku. Účinek NAG na *potkany* s APL způsobil snížení míry úmrtnosti, zvýšení diurézy, snížení proteinurie, zvýšení vylučování kreatininu a močoviny, což ukazuje na normalizaci vylučovací funkce ledvin a metabolismu dusíku. Zároveň NAG statisticky významně převýšil účinek kvercetinu ve většině ukazatelů, a tedy i úroveň účinnosti. NAG je tedy účinným lékem pro léčbu APL, který může být použit při parenterálním podání.

**Klíčová slova:** N-acetylglukosamin • nefroprotektivní účinek • experimentální akutní poškození ledvin

### Introduction

Treatment of acute kidney injury (AKI) is an important problem of modern medical and pharmaceutical practice. AKI is a common complication of not only renal pathology, but also of different diseases, and it also can be a result of drug therapy and other palliative or surgical treatment methods<sup>1)</sup>. According to the data of world statistics, the prevalence rate of AKI is 5–10% of all indoor patients<sup>2)</sup>. Much often AKI occurs in critically ill patients reaching the prevalence rate of up to 67%, herewith, in 5% a severe AKI develops, which requires renal replacement therapy<sup>3)</sup>. Epidemiological studies demonstrate that AKI gradually spreads, since during over last 25 years its morbidity has increased almost by 20 times<sup>2)</sup>. The greatest danger at AKI is mortality, which is up to 15% in the overall population of patients with AKI and reaches 80% in patients in critical state<sup>3)</sup>. Therefore, optimization of AKI treatment and widening of inventory of efficient nephroprotective drugs are an important task of modern pharmaceutical science.

As the means for the solution of this problem, the drugs on the basis of natural membrane protectors can be implemented, whose properties include a nephroprotective effect with different mechanisms of action. With this purpose the study of different amino sugar glucosamine (GA) derivatives is prospective, since GA is a natural human metabolite and is practically safe for the organism<sup>4, 5)</sup>. GA as a part of glycosaminoglycans and glycoproteins

Assoc. prof. Sergii K. Shebeko, PhD (✉) • I. A. Zupanets • O. O. Tarasenko

Department of Clinical Pharmacology and Clinical Pharmacy, National University of Pharmacy

27 Pushkinska str., 61057 Kharkiv, Ukraine

e-mail: shebeko.sk@gmail.com

is comprised in the structures of biological membranes, in particular, in glomerular basement membrane, which stipulates its nephroprotective properties<sup>6)</sup>. In the earlier experimental research we have proven the efficacy thereof upon the conditions of oral administration at glomerulonephritis<sup>7)</sup> and membranous nephropathy<sup>8)</sup>.

However, GA nephroprotective action is slow, which is the drawback thereof. It implements its pharmacological effects through the biologically active form – N-acetylglucosamine (NAG) – and only in this form it is included in the structures of the damaged membranes, i.e. only after acetylation<sup>9)</sup>. At the same time, in the case of oral administration, GA is transformed to NAG in the liver with the output of not more than 44%, the rest of amino sugar participates in energy metabolism<sup>10)</sup>.

NAG is an active metabolite of GA, therefore, it potentially causes more expressed nephroprotective effect by the direct mechanism of action. Herewith, NAG has obvious advantages upon the condition of parenteral administration, since this route of administration allows neutralizing the influence of the effect of *first-pass metabolism* and providing the intake of the entire administered dose of NAG to blood circulatory system in the unchanged form. All this allows assuming high efficacy of this drug by nephroprotective action not only at latent course of kidney diseases, but also at acute injuries and exacerbations of chronic nephropathies.

In view of the above-mentioned, the purpose of this work is the study of the efficiency of N-acetylglucosamine at parenteral administration under development of AKI in rats.

## Experimental part

### Materials

NAG in the form of a 6% solution for injections was obtained from PJSC SIC Borschahivskiy CPP (Ukraine) as a pilot series. Quercetin was used in the form of the commercial drug Corvitin® (PJSC SIC Borschahivskiy CPP, Ukraine), which is a lyophilized powder for injections. Highly purified glycerol from Sigma-Aldrich (USA) was used to induce AKI. The biochemical assays were performed using the commercial kits Creatinine FS (cat. No. 117119910021), Urea FS (cat. No. 131019910021) and Total protein UC FS (cat. No. 102109910021) manufactured by DiaSys Diagnostic Systems GmbH (Germany).

### Methods

#### Test object and its preparation

NAG was used as the object of research in the form of a 6% solution for injections. It was diluted immediately prior to use with a 0.9 % sodium chloride solution for injections to the concentration of 20 mg/ml.

#### Reference object and its preparation

Reference object was Corvitin®, which is an injectable dosage form of quercetin. This drug has a reliable nephroprotective effect at intraperitoneal (i.p.) administration in

rats at a dose of 34 mg/kg, which is proven in experimental studies on different models of nephropathy<sup>11)</sup>. Corvitin® was diluted immediately prior to use with a 0.9% sodium chloride solution for injections to the concentration of 20 mg/ml.

#### Experimental animals and grouping

Adult random-bred male albino rats with the body weight of 170–190 g were included in the present study. The rats were obtained from the vivarium of the Central Research Laboratory (National University of Pharmacy, Kharkiv, Ukraine) in the amount of 48 animals. The rats were housed under conventional laboratory conditions in standard polypropylene cages in a well-ventilated room at  $25 \pm 1$  °C and a relative humidity  $55 \pm 5\%$  with a regular 12 h light/12 h dark cycle<sup>12, 13)</sup>. The animals received standard rat diet and water *ad libitum*.

All researches were conducted in accordance with the EU Directive 2010/63/EU on compliance with the laws, directives and administrative regulations of the EU countries on the protection of animals used for scientific purposes<sup>14)</sup>. Study design was approved by the Bioethics Commission of the National University of Pharmacy (Protocol No. 1 of 20 January 2016).

All animals were randomly divided into 5 experimental groups as follows:

- group 1 – intact control (healthy animals receiving vehicle intramuscularly (i.m., n = 8)
- group 2 – control pathology (untreated animals receiving vehicle i.m., n = 10)
- group 3 – animals with AKI treated with NAG i.m. at 50 mg/kg (n = 10)
- group 4 – animals with AKI treated with NAG intravenously (i.v.) at 50 mg/kg (n = 10)
- group 5 – animals with AKI treated with Corvitin® (i.p.) at 34 mg/kg (n = 10)

#### Study design

On the first day of the experiment, AKI was induced in rats with an i.m. injection of 50% solution of glycerol (Sigma-Aldrich, USA) at a dose of 10 ml/kg into the muscles of the hind limbs, herewith, the animals were preliminarily deprived of water for 24 hours<sup>15)</sup>. After that animals received NAG i.m. and i.v. at a dose of 50 mg/kg, which corresponds to the effective dose of GA on the model of autoimmune glomerulonephritis<sup>7)</sup>. Corvitin® was administered i.p. at a dose of 34 mg/kg, which corresponds to the ED<sub>50</sub> by nephroprotective action<sup>11)</sup>. All test samples were administered in the form of solutions for injections daily during a week. Animals of control groups received i.m. an equivalent dose of a 0.9% sodium chloride solution for injections. A week after the simulation of pathology in rats, the functional state of the kidneys was assessed. Further, they were taken out of the study with the purpose of obtainment of their blood and urine for biochemical assays.

#### Biological samples preparation and storage

At the end of the experiment, rats were sacrificed under anesthesia with ketamine/xylazine (75/10 mg/kg, i.p.)<sup>16)</sup>. Blood

samples were collected from the inferior vena cava and were centrifuged at 1500 g at +4 °C for 10 min using a refrigerated centrifuge Eppendorf 5702R (Eppendorf, Germany). Urine samples were collected using individual metabolic cages and were centrifuged at 500 g for 10 min. The supernatants were separated and used for biochemical assays. All biological samples were frozen and stored at –80 °C.

#### Evaluation of functional state of kidneys

At the end of the study, the spontaneous daily diuresis and the volume of consumed fluid in animals were determined in individual metabolic cages, and then the relative diuresis was calculated. In the collected urine, the level of the protein was determined and its daily urine excretion was calculated<sup>17)</sup>. The glomerular filtration rate (GFR) was evaluated by the clearance of endogenous creatinine, the tubular reabsorption (TR) and urea clearance (UC) were also calculated, using the standard formulas<sup>17–19)</sup>:

$$GFR = U_{cr} \times V / P_{cr} \quad [\text{Eq. 1}]$$

$$TR = (1 - P_{cr} / U_{cr}) \times 100\% \quad [\text{Eq. 2}]$$

$$UC = U_{ur} \times V / P_{ur} \quad [\text{Eq. 3}]$$

where  $U_{cr}$  is the urine creatinine concentration,  $V$  is the daily diuresis,

$P_{cr}$  is the plasma creatinine concentration,

$U_{ur}$  is the urine urea concentration, and

$P_{ur}$  is the plasma urea concentration.

#### Evaluation of biochemical parameters

In order to evaluate the parameters of nitrogen metabolism in animals, biochemical assays were performed

using commercial kits and an Express Plus automatic biochemical analyzer (Bayer Diagnostics, Germany). The creatinine content was determined in the blood and urine of animals by the reaction of Jaffe and the urea content was determined using the urease-glutamate dehydrogenase method. The urinary excretion of creatinine and urea was calculated as well. The concentration of urine protein was determined by a photometric test based on the reaction with pyrogallol red-molybdate complex<sup>17)</sup>.

#### Statistical analysis

All obtained results were processed by descriptive statistics and presented as the mean  $\pm$  standard error of the mean ( $M \pm SE$ ) excluding the survival rate. Statistical differences between groups were analyzed using one-way ANOVA following Scheffe post-hoc test<sup>20)</sup>. The analysis of animal survival was performed according to the Kaplan-Meier method<sup>21)</sup>, while the generalised Wilcoxon test was used to detect differences between groups. The utilized computer software included IBM SPSS Statistics v. 22 (IBM Corp.) and MS Excel 2016 (Microsoft Corp.). The level of statistical significance was considered as  $p < 0.05$ .

#### Results

The results of the study have demonstrated that a week after simulation of the pathology, low survival rate was observed in untreated animals, which was reduced to 50% (Fig. 1). Rats were floppy, inactive, with edema and ascites, food intake was limited.

Herewith, the statistically significant reduction of spontaneous and relative diuresis by 1.9 and 1.5 times

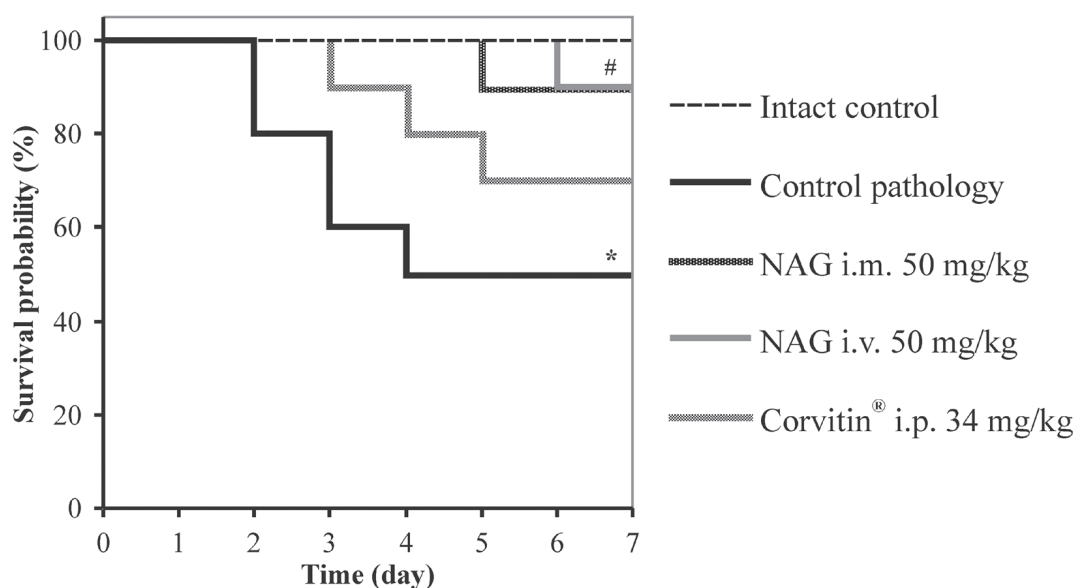


Fig. 1. Kaplan-Meier survival curves in rats with AKI under the influence of NAG ( $n = 48$ )

\* significant relative to the intact control group ( $p < 0.05$ )

# significant relative to the control pathology group ( $p < 0.05$ )

$n$  – number of animals in the experiment

Table 1. Indices of excretory function of the kidneys under the effect of NAG on the background of AKI in rats ( $M \pm SE$ ,  $n = 48$ )

Group of animals	Diuresis (ml/day)	Relative diuresis (%)	GFR (ml/day)	TR (%)
Intact control	$6.6 \pm 0.3$	$52.0 \pm 0.4$	$420.3 \pm 15.2$	$98.44 \pm 0.05$
Control pathology	$3.5 \pm 0.1^*$	$35.8 \pm 0.6^*$	$95.9 \pm 3.4^*$	$96.39 \pm 0.12^*$
NAG i.m. 50 mg/kg	$5.4 \pm 0.2^{*/\#/\wedge}$	$46.9 \pm 0.8^{*/\#/\wedge}$	$238.1 \pm 8.9^{*/\#/\wedge}$	$97.74 \pm 0.03^{*/\#/\wedge}$
NAG i.v. 50 mg/kg	$5.6 \pm 0.2^{*/\#/\wedge}$	$47.9 \pm 0.6^{*/\#/\wedge}$	$247.2 \pm 9.9^{*/\#/\wedge}$	$97.73 \pm 0.04^{*/\#/\wedge}$
Corvutin® i.p. 34 mg/kg	$4.8 \pm 0.1^{*/\#}$	$45.0 \pm 0.2^{*/\#}$	$168.0 \pm 4.3^{*/\#}$	$97.12 \pm 0.10^{*/\#}$

\* significant relative to the intact control group ( $p < 0.05$ )# significant relative to the control pathology group ( $p < 0.05$ )^ significant relative to the animals treated with Corvutin® ( $p < 0.05$ )

n – number of animals in the experiment

Table 2. The influence of NAG on nitrogen metabolism in rats on the background of AKI ( $M \pm SE$ ,  $n = 48$ )

Group of animals	Content in blood		Urine excretion	
	creatinine ( $\mu\text{mol/l}$ )	urea (mmol/l)	creatinine ( $\mu\text{mol/day}$ )	urea (mmol/day)
Intact control	$56.3 \pm 1.8$	$5.1 \pm 0.3$	$23.5 \pm 0.5$	$0.89 \pm 0.05$
Control pathology	$215.2 \pm 8.2^*$	$19.0 \pm 0.8^*$	$20.6 \pm 0.4^*$	$0.73 \pm 0.03^*$
NAG i.m. 50 mg/kg	$116.0 \pm 6.4^{*/\#/\wedge}$	$11.1 \pm 0.4^{*/\#/\wedge}$	$27.2 \pm 0.6^{*/\#}$	$1.21 \pm 0.04^{*/\#}$
NAG i.v. 50 mg/kg	$112.7 \pm 5.3^{*/\#/\wedge}$	$10.9 \pm 0.6^{*/\#/\wedge}$	$27.5 \pm 0.5^{*/\#/\wedge}$	$1.25 \pm 0.03^{*/\#}$
Corvutin® i.p. 34 mg/kg	$148.6 \pm 6.2^{*/\#}$	$15.2 \pm 0.6^{*/\#}$	$24.9 \pm 0.9^{\#}$	$1.15 \pm 0.05^{*/\#}$

\* significant relative to the intact control group ( $p < 0.05$ )# significant relative to the control pathology group ( $p < 0.05$ )^ significant relative to the animals treated with Corvutin® ( $p < 0.05$ )

n – number of animals in the experiment

was observed, respectively, as compared to intact animals, as well of GFR by 4.4 times and TR to 96.39% (Table 1). Besides, expressed proteinuria was observed, which reached 41.3 mg/day (Fig. 2). All this evidences an impaired renal excretory function and the development of AKI.

Due to this, a sharp reduction of excretion of nitrogen compounds occurred and azotemia developed in animals. The content of creatinine and urea in blood as compared to intact rats increased by 3.8 and 3.7 times, respectively. Herewith, urine excretion was reduced: of creatinine by 14 %, and of urea by 22% (Table 2).

Respective changes were also observed in the UC index, which reflects the rate of blood purification from this substance. In the control pathology group this index reduced to 38.4 ml/day, which was reliably less by 4.6 times compared to intact rats (Fig. 3).

In contrast, when using NAG for treatment of animals, an expressed positive effect on the AKI course was observed. Under the effect of the amino sugar the functional state of rats normalized and the survival reliably increased to 90% (Fig. 1). The statistically

significant improvement of renal excretory function was observed as compared to untreated animals. Herewith, spontaneous diuresis increased by 1.5 and 1.6 times at i.m. and i.v. administration, respectively, and relative diuresis by 1.3 times. GFR increased by 2.5 times at i.m. administration and by 2.6 times at i.v. administration, and also the TR index increased by 1.4% (Table 1). Furthermore, NAG facilitated statistically significant reduction of proteinuria by 2.0 at i.m. administration and by 2.2 times at i.v. administration (Fig. 2).

Positive changes under influence of NAG were also observed in nitrogen metabolism. Hexosamine for both routes of administration has statistically significantly increased urine excretion of creatinine relative to the control group by 1.3 times, and of urea by 1.7 times. Due to this, the content of creatinine in blood reduced by 1.9 times, and of urea by 1.7 times (Table 2). Besides, under influence of NAG the statistically significant increase in UC occurred: by 2.9 times at i.m. administration and by 3.0 times at i.v. administration (Fig. 3). The described picture evidences the improvement of the functional con-

dition of the kidneys and normalization of the nitrogen metabolism in rats with AKI.

The reference drug Corvitin<sup>®</sup>, which is a parenteral form of quercetin, has demonstrated slightly lower level of efficacy. Under the influence thereof the survival rate in rats increased to 70%, which has no statistically significant distinctions from the untreated animals (Fig. 1). The spontaneous and relative diuresis statistically significantly increased by 1.4 and 1.3 times, respectively, the GFR index has increased by 1.8 times, and the TR by 0.76% (Table 1). Also, a statistically significant reduction of proteinuria was observed, by 1.4 times, as compared to the control pathology (Fig. 2).

Additionally, Corvitin<sup>®</sup> facilitated the creatinine excretion by 1.2 times and the urea excretion – by 1.6 times, and reduced their content in blood by 1.3–1.4 times (Table 2). At the same time, urea elimination from blood was improved, which was confirmed by the statistically significant increase in the UC by 2.0 times as compared to the untreated group (Fig. 3). All this evidences an improvement of the functional condition of the rat kidneys with AKI under the influence of Corvitin<sup>®</sup>, however, by the level of efficacy it statistically significantly conceded to NAG in the majority of studied indices.

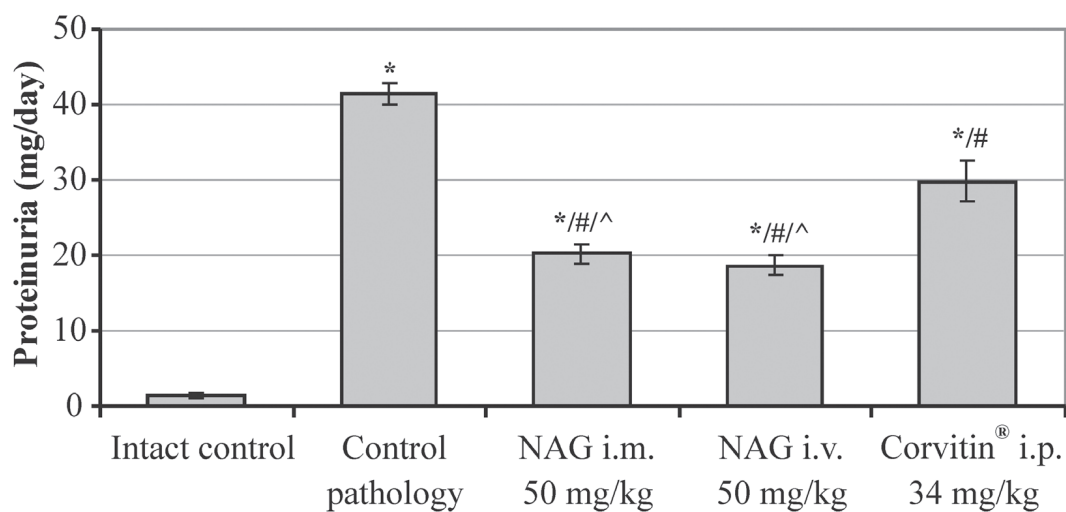


Fig. 2. The influence of NAG on the proteinuria in rats with AKI ( $M \pm SE$ ,  $n = 48$ )

\* significant relative to the intact control group ( $p < 0.05$ )

# significant relative to the control pathology group ( $p < 0.05$ )

^ significant relative to the animals treated with Corvitin<sup>®</sup> ( $p < 0.05$ )

$n$  – number of animals in the experiment

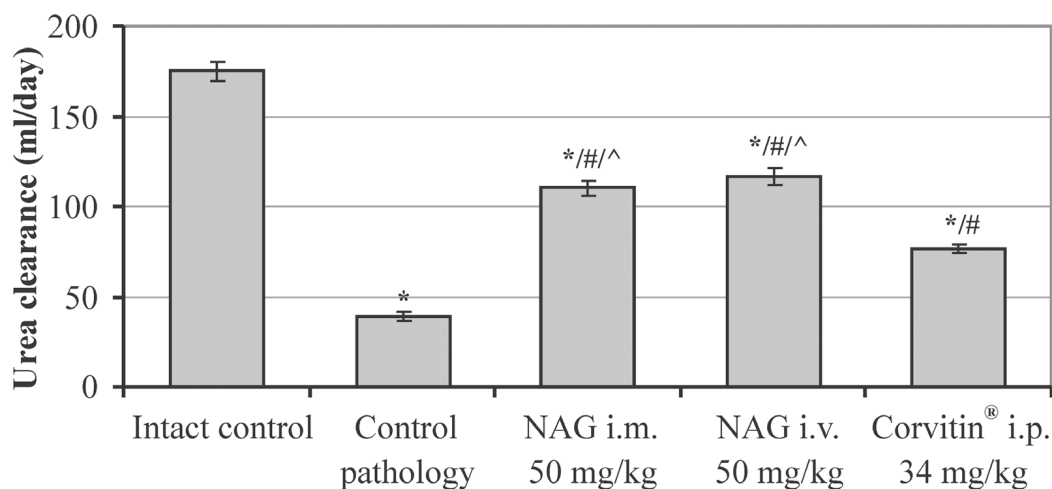


Fig. 3. The influence of NAG on the urea clearance in rats with AKI ( $M \pm SE$ ,  $n = 48$ )

\* significant relative to the intact control group ( $p < 0.05$ )

# significant relative to the control pathology group ( $p < 0.05$ )

^ significant relative to the animals treated with Corvitin<sup>®</sup> ( $p < 0.05$ )

$n$  – number of animals in the experiment



## Discussion

The analysis of the obtained data demonstrates that under the influence of i.m. administration of glycerol, in rats full-scale picture of AKI develops during a week. This is evidenced by stable oliguria, water retention in the organisms and a sharp reduction of the excretory function of the kidneys. Due to this, the excretion of nitrogenous substances is reduced, and azotemia and autointoxication develop in rats organisms. This causes worsening of their functional state and a high rate of mortality. The described situation is characteristic of an acute glycerol nephrosis and occurs under the influence of myoglobin, which is formed due to rhabdomyolysis and causes toxic-ischemic kidney injury<sup>3, 15</sup>). Therefore, this experimental model is stipulated by the toxic and ischemic mechanisms of the nephropathy development.

NAG has an expressed positive effect on AKI in rats with both routes of administration, i.m. and i.v., without statistical differences from each other. Studied hexosamine significantly improved the excretory function of the kidneys, reduced water retention, signs of edema, improved the excretion of nitrogen compounds with urine, and reduced the level of azotemia. As a result, the signs of intoxication in animals reduced, their general functional state was improved, and the survival rate increased to 90%.

Amino sugars from the group of GA derivatives were rarely studied as agents for the treatment of renal pathology. In previous researches, the nephroprotective properties of GA were studied in rats at oral administration in the conditions of different models of kidney injury<sup>7, 8</sup>). It was proved that GA integrates into the damaged structures of the kidney tissue and increases the content of endogenous hexosamines in it<sup>8</sup>). These results correlate with the data from other studies, which showed the efficacy of GA in the treatment of kidney fibrosis in mice<sup>22</sup>), contrast-induced acute kidney injury in rats<sup>23</sup>), and the efficacy of its conjugates in rats with renal ischemia/reperfusion injury<sup>24, 25</sup>). Research data of the effectiveness of NAG as a treatment of AKI have not been presented until now.

The comparator Corvutin<sup>®</sup>, which contains quercetin, showed a positive effect on AKI as expected. It significantly improved the excretory function of the kidneys, increased the excretion of nitrogen compounds, and reduced their blood content. These results are consistent with other researches, in which the nephroprotective properties of quercetin were studied and the prospects for its use in kidney diseases were proven<sup>11, 26–28</sup>).

It should be noted that NAG at both routes of administration has statistically significantly exceeded the action of Corvutin<sup>®</sup> on the level of efficacy in the most of indices. High efficiency of NAG is explained by the fact that it is an active metabolite of GA<sup>5</sup>) and causes a direct protective action on the damaged membrane structures of the kidney filter and intercellular substance by binding to the macromolecules thereof in the unchanged form<sup>6</sup>). At the same time, the in-

fluence of quercetin on the kidney tissue is indirect and develops as a result of antioxidant, antihypoxic, anti-inflammatory and other effects<sup>11, 29, 30</sup>). In this regard, the obtained data are very important for medicinal and pharmaceutical practice, since they discover a great prospect for the use of a new nephroprotective drug for the treatment of AKI – NAG in an injectable dosage form.

The nephroprotective effect of NAG is stipulated by the specific biological properties thereof. Being a part of glycosaminoglycans and glycoproteins, which cover the surface of the glomerular basement membrane, NAG not only performs the protective function, but also facilitates the creation of a negative charge on the membrane, which prevents the penetration of blood serum protein therethrough, and hence, the development of proteinuria<sup>6</sup>). Furthermore, the stabilization of the superficial charge of the basement membrane during nephropathy development causes normalization of hemodynamics in nephrons, which is inevitably impaired when the disease develops.

When comparing the efficacy of the amino sugar at different routes of administration, it turns out that it demonstrates the same level of activity without statistically significant differences both at i.m. and i.v. injection. However, at the same time, the i.m. route of administration is easier and more convenient when using the drug. Therefore, at further experimental research, as well as during the clinical trial, the i.m. route of administration for NAG should be considered as the most optimal one.

Thus, the obtained experimental data evidence that NAG in an injectable dosage form causes an expressed nephroprotective action in rats with AKI and is a prospective way of therapy of acute nephropathies, as well as of exacerbations of chronic renal pathology. It is expedient to use solution for injections of NAG upon conditions of i.m. administration, however, it can be also administered i.v. in accordance with the purpose of treatment.

## Conclusion

The amino sugar NAG causes an expressed nephroprotective action at parenteral administration in the condition of AKI development in rats. Parenteral route of administration is an additional advantage for NAG, since it stipulates the intake of the entire administered dose of hexosamine in the active form to blood circulation. NAG statistically significantly exceeds the action of the reference drug Corvutin<sup>®</sup> (a quercetin parenteral form) by the degree of efficacy at AKI in rats. NAG in solution for injections is a prospective drug for AKI treatment, as well as of exacerbations of chronic renal pathology. It is expedient to further study the injectable dosage form of NAG at i.m. administration as a drug for therapy of renal pathology.

**Conflict of interest:** none.

## References

1. **Gilbert S. J., Weiner D. E., Bomback A. S., Perazella M. A., Tonelli M.** National Kidney Foundation Primer on Kidney Diseases, 7<sup>th</sup> ed. Philadelphia: Elsevier 2018.
2. **Lerma E., Sparks M., Topf J.** Nephrology secrets, 4<sup>th</sup> ed. Philadelphia: Elsevier 2019.
3. **Feehally J., Floege J., Johnson R. J., Tonelli M.** Comprehensive clinical nephrology, 6<sup>th</sup> ed. Philadelphia: Elsevier 2019.
4. **Baynes J. W., Dominiczar M. H.** Medical biochemistry, 5<sup>th</sup> ed. Philadelphia: Elsevier 2019.
5. **Lieberman M., Peet A.** Marks' basic medical biochemistry: A clinical approach, 5<sup>th</sup> ed. Philadelphia: Wolters Kluwer 2018.
6. **Morita H., Yoshimura A., Kimata K.** The role of heparan sulfate in the glomerular basement membrane. *Kidney International* 2008; 73, 247–248.
7. **Shebeko S. K., Zupanets I. A.** Study of the pharmacological properties of some glucosamine derivatives under conditions of development of experimental autoimmune glomerulonephritis. *Klinična farmaciâ* 2006; 10(2), 31–35 (in Ukrainian).
8. **Zupanets I. A., Shebeko S. K.** The influence of experimental therapy on the dynamics of endogenous glucosamine content in laboratory animals with nephropathy. *Eksp. Klin. Farmakol.* 2006; 69(6), 40–42 (in Russian).
9. **Chen J. K., Shen C. R., Liu C. L.** N-Acetylglucosamine: production and applications. *Mar. Drugs* 2010; 8, 2493–2516.
10. **Du Souich P.** Absorption, distribution and mechanism of action of SYSADOAS. *Pharmacology & Therapeutics* 2014; 142(3), 362–374.
11. **Shebeko S. K., Zupanets I. A., Popov O. S., Tarasenko O. O., Shalamay A. S.** Effects of quercetin and its combinations on health. In: Watson R. R., Preedy V. R., Sherna Z. (eds.) *Polyphenols: mechanisms of action in human health and disease*, 2<sup>nd</sup> ed. London: Academic Press 2018; 373–394.
12. **Guide for the care and use of laboratory animals**, 8<sup>th</sup> ed. Washington: National Academies Press 2011.
13. **Sharp P., Villano J. S.** The laboratory rat, 2<sup>nd</sup> ed. Boca Raton: CRC Press 2013.
14. **Directive 2010/63/EU** of the European Parliament and of the Council of 22 September 2010 on the protection of animals used for scientific purposes. *Official Journal of the European Union* 2010; L276, 33–79.
15. **Bao Y. W., Yuan Y., Chen J. H., Lin W. Q.** Kidney disease models: tools to identify mechanisms and potential therapeutic targets. *Zoological Research* 2018; 39(2), 72–86.
16. **Flecknell P. A.** Laboratory animal anesthesia, 4<sup>th</sup> ed. Oxford: Academic Press 2015.
17. **Hart S. A., Hropot M., Greger R., Gögelein H., Bleich M.** Activity on urinary tract. In: Vogel H. G. (ed.) *Drug discovery and evaluation: Pharmacological Assays*, 3<sup>rd</sup> ed. Berlin: Springer-Verlag 2008; 457–510.
18. **Koeppen B. M., Stanton B. A.** Renal physiology, 6<sup>th</sup> ed. Philadelphia: Elsevier 2019.
19. **Speeckaert M., Delanghe J.** Assessment of renal function. In: Turner N., Lameire N., Goldsmith D. J., Wineals C. G., Himmel-farb J., Remuzzi G. (eds.) *Oxford textbook of clinical nephrology*, 4<sup>th</sup> ed. Oxford: University Press 2016; 44–61.
20. **Islam M. A., Al-Shiha A.** Foundations of biostatistics. Singapore: Springer 2018.
21. **Dudley W. N., Wickham R., Coombs N.** An introduction to survival statistics: Kaplan-Meier analysis. *J. Adv. Pract. Oncol.* 2016; 7(1): 91–100.
22. **Park J., Lee S. Y., Ooshima A., Yang K. M., Kang J. M., Kim Y. W., Kim S. J.** Glucosamine hydrochloride exerts a protective effect against unilateral ureteral obstruction-induced renal fibrosis by attenuating TGF- $\beta$  signaling. *J. Mol. Med.* 2013; 91(11), 1273–1284.
23. **Hu J., Chen R., Jia P., Fang Y., Liu T., Song N., Xu X., Ji J., Ding X.** Augmented O-GlcNAc signaling via glucosamine attenuates oxidative stress and apoptosis following contrast-induced acute kidney injury in rats. *Free Radic. Biol. Med.* 2017; 103, 121–132.
24. **Wang X., Xiong M., Zeng Y., Sun X., Gong T., Zhang Z.** Mechanistic studies of a novel mycophenolic acid-glucosamine conjugate that attenuates renal ischemia/reperfusion injury in rat. *Mol. Pharm.* 2014; 11, 3503–3514.
25. **Fu Y., Lin Q., Gong T., Sun X., Zhang Z. R.** Renal-targeting triptolide-glucosamine conjugate exhibits lower toxicity and superior efficacy in attenuation of ischemia/reperfusion renal injury in rats. *Acta Pharmacol. Sin.* 2016; 37, 1467–1480.
26. **Yang H., Song Y., Liang Y. N., Li R.** Quercetin treatment improves renal function and protects the kidney in a rat model of adenine-induced chronic kidney disease. *Med. Sci. Monit.* 2018; 24, 4760–4766.
27. **Layal K., Perdhana I. S., Louisa M., Estuningtyas A., Soetikno V.** The effects of quercetin on oxidative stress and fibrosis markers in chronic kidney disease rat model. *Med. J. Indones.* 2017; 26, 169–177.
28. **Vargas F., Romecín P., García-Guillén A. I., Wangesteen R., Vargas-Tendero P., Paredes M. D., Atucha N. M., García-Estañ J.** Flavonoids in kidney health and disease. *Front. Physiol.* 2018; 9, Article 394. <https://www.frontiersin.org>
29. **Anand David A. V., Arulmoli R., Parasuraman S.** Overviews of biological importance of quercetin: a bioactive flavonoid. *Pharmacognosy Review* 2016; 10(20), 84–89.
30. **Li Y., Yao J., Han C., Yang J., Chaudhry M. T., Wang S., Liu H., Yin Y.** Quercetin, inflammation and immunity. *Nutrients* 2016; 8(3), 167–181.